

Aligner products presentation for Clear Correct

Prepared by

Kindos Medikal San. Ve Tic.
Ltd. Őti.



clearcorrect



KINDOS
— MEDİKAL —

1- Typodont

With custom logo box option



With logo



2- IPR Set

Kerberos Inter Proximal enamel kit

Model: C3-11KIT

Inter proximal enamel kit



Order name: C3-11KIT

Feature:

Rectilinear motion handpiece and carborundum blade:

1-Apply to invisible treatment; rapid repair of dental enamel

2-Carborundum blade is stable and durable

3-The blade frame and the blade adopts the locking type design, its

more solid, has a good compatibility with all kinds of handpiece

4-When the knife frame put in to handpiece, can be completely fixed,

no shake

5-There are holes in the blade, which can effectively discharge the

water and powder produced in the glaze.

Professional Efficient Precise

Technical:

15 μm	15HD	2 PCS
25 μm	25HD	2 PCS
40 μm	40HD	2 PCS
60 μm	60HD	2 PCS
90 μm	90HD	2 PCS

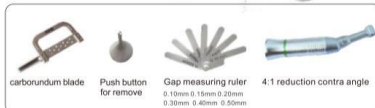
Two side diamond
(with hole)



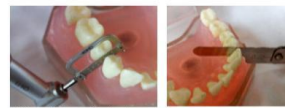
10pc



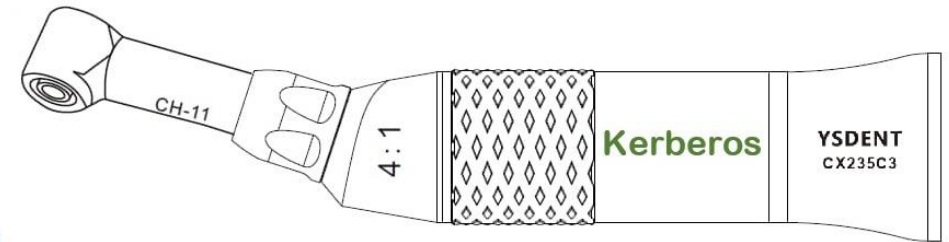
up an down movement



carborundum blade Push button for remove Gap measuring ruler 0.10mm 0.15mm 0.20mm 0.30mm 0.40mm 0.50mm 4:1 reduction contra angle



Different thickness for the diamond



C3-11



*HIGH QUALITY

3- IPR Gauge





Reference product for **Clear aligner**

Kindos Medikal San. Ve Tic. Ltd. Şti



Abdurrahmangazi Mah. Benmer Sok. No:21 C/13
Sincaktepe/İstanbul/Türkiye
WhatsApp: +90 533 383 87 90 info@kindosmedikal.com
www.kindosmedikal.com +90 216 829 90 77



Hole Punch Pliers

Code:P401-01
Pack:1pc/pk

Creates half-moon cutouts for relief of clear aligners around bonded buttons used for elastics and nips away plastic to provide soft tissue clearance to prevent aligner impingement of tissue.



Tear Drop Pliers

Code:P401-02
Pack:1pc/pk

Creates a notch at the gingival margin of clear aligners anywhere elastic hooks are required.



Vertical Pliers

Code:P401-03
Pack:1pc/pk

Emphasizes over-correction of rotations by producing an indentation at the mesial or distal line angles on the facial and/or lingual of a specific tooth.



Horizontal Pliers

Code:P401-04
Pack:1pc/pk

Produces an indentation to accent individual root torque.



Micro ramp thermal forming Pliers

Code:P401-05
Pack:1pc/pk

Designed for a gibbosity on clear appliances to close space.

Kindos Medikal San. Ve Tic. Ltd. Şti



Abdurrahmangazi Mah. Benmer Sok. No:21 C/13
Sincaktepe/İstanbul/Türkiye
WhatsApp: +90 533 383 87 90 info@kindosmedikal.com
www.kindosmedikal.com +90 216 829 90 77



4- Pilers
Excellent
craftsmanship

Horizontal Pliers



The semi-circular notch can be placed on any teeth that need to be bonded to the tongue buckle or bracket



Use horizontal pliers to twist the teeth at the angle between the mesial and distal midline to improve the control of the twisted teeth.

Vertical Pliers

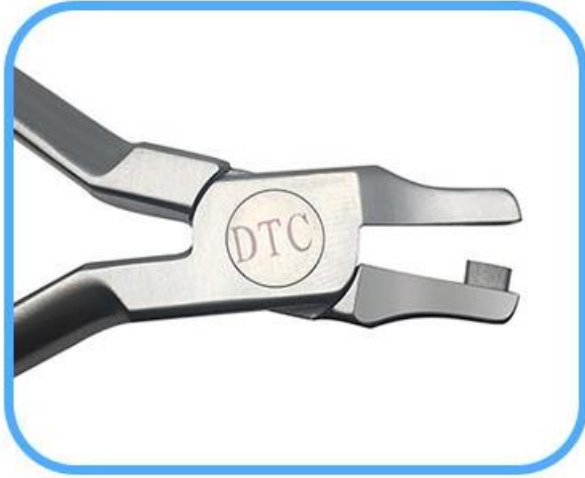


A depression is formed in the indentation or the gingival side of the attachment to increase the retention of the transparent braces or retainer.



Torque boosting of individual tooth roots is achieved by pinching recesses at the lip or lingual gum edges of any tooth.

Tear Drop Pliers



The teardrop-shaped traction hook can be used for type II traction, type III traction, triangular traction, and type I adduction traction. The use of antibody-only traction and traction for elongation of certain teeth.



The angle and depth of the teardrop-shaped traction hook can be adjusted freely according to the direction of the elastic traction hook



With other bonding accessories, the teeth are elongated by traction so that the invisible appliance fits

Hole Punch Pliers



Cut off part of the braces on the tongue side of the central incisor so that the braces will not press the dental papilla



The semi-circular notch can be placed on any teeth that need to be bonded to the tongue buckle or bracket



Punch forceps can make a semi-circular notch on the lip side of the appliance

5- Outie aligner (ABS Materyal)



6- Chewies

Chewies™
Aligner Tray Seaters



7- Buttons



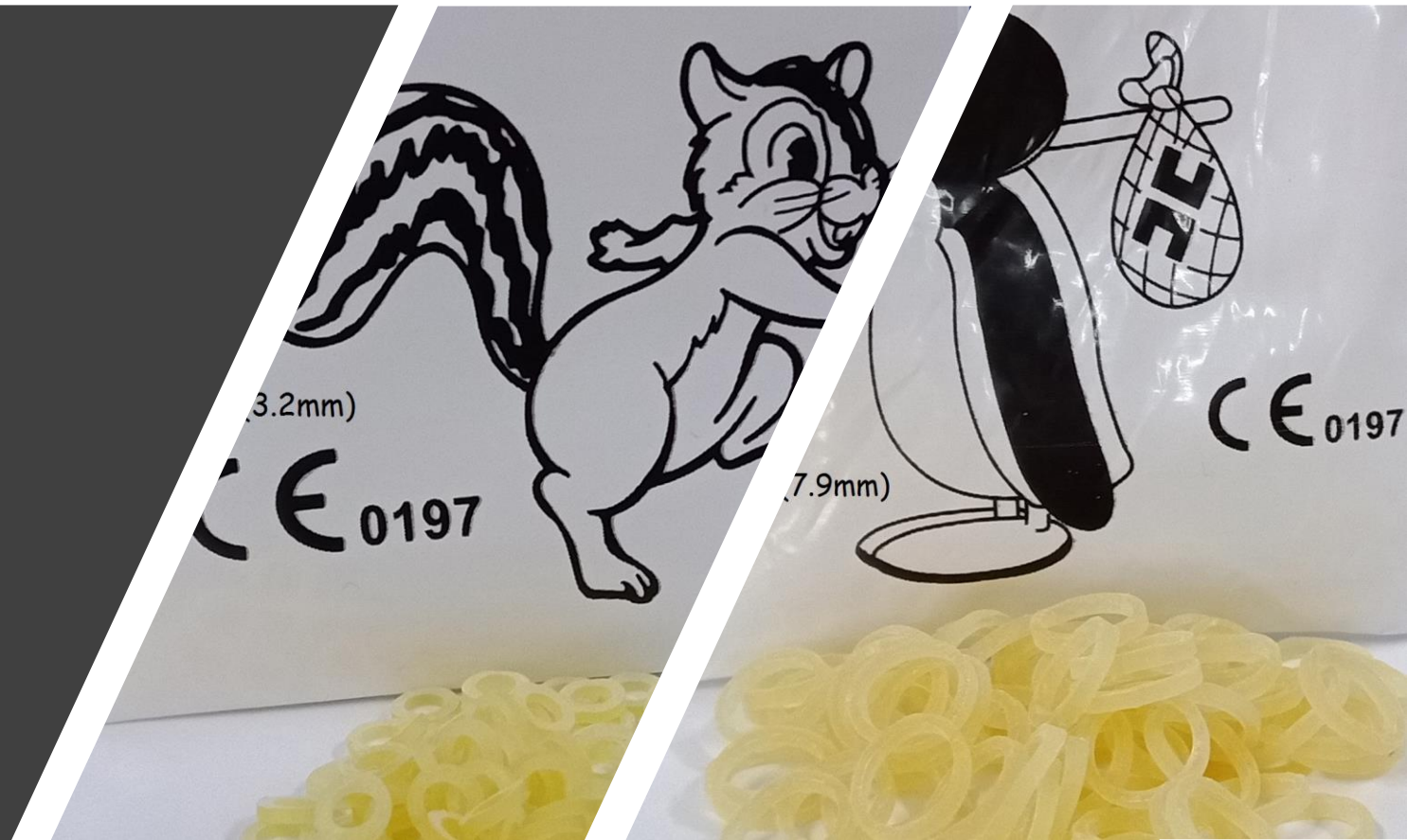


O ring

Size	Light Force 2.5oz	Light Force 3.5oz	heavy Force 6.5oz	Medium Force 4.5oz
1/8(3.2mm)	A641-32	A642-32	A643-32	A644-32
3/16(4.8mm)	A641-48	A642-48	A643-48	A644-48
1/4(6.4mm)	A641-64	A642-64	A643-64	A644-64
5/16(7.9mm)	A641-79	A642-79	A643-79	A644-79
3/8(9.5mm)	A641-95	A642-95	A643-95	A644-95

8- Intro Oral Elastic

Size	Light Force 2.5oz	Light Force 3.5oz	heavy Force 6.5oz	Medium Force 4.5oz
1/8(3.2mm)				
3/16(4.8mm)				
1/4(6.4mm)				
5/16(7.9mm)				
3/8(9.5mm)				



9- Attachment remover piler



Thanks...

Kindos Medikal San. Ve Tic. Ltd. Şti

Kemal Türkler Mah. Gülce Sok. No:2/1 Arslan Plaza Daire:4

Sancaktepe/Istanbul/Turkey

+90 216 629 90 77

Whatsapp: +90 533 383 87 90

Ufuk Altınbaş

ufuk@kindosmedikal.com